

The logo for NARBO (Network of Asian River Basin Organizations) features the acronym 'NARBO' in a bold, yellow, sans-serif font. The letters are set against a blue background that includes a stylized globe with white latitude and longitude lines. Below the acronym, the full name 'Network of Asian River Basin Organizations' is written in a smaller, white, sans-serif font.

Network of Asian River Basin Organizations

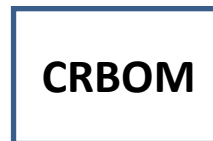


Network of Asian River Basin Organizations

The Fourth General Meeting

Friday, 12 November 2010

The Implementation of NARBO RBO Performance Benchmarking in Indonesia



Activities Related to NARBO RBO Performance Benchmarking in Indonesia

1. NARBO Small Workshop on Benchmarking (Jatiluhur, Oct 2004)
2. NARBO Member Consultation Workshop on Benchmarking (Batu, Nov 2004)
2. Launching of NARBO Performance Benchmarking (Bali, Sep 2005)
3. NARBO Peer Reviewer Orientation and Certification & Jasa Tirta II Public Corporation Peer Review (Jatiluhur, 31 Oct -03 Nov 2005)
4. NARBO peer review of SA Balai Besar WS Citarum (Bandung, Feb 2008)
5. National RBO Performance Benchmarking in 6 selected RBOs (2008)
6. National RBO Performance Benchmarking in 10 selected RBOs (2009)
7. National RBO Performance Benchmarking in 9 selected RBOs (2010)

Objectives of RBO Performance Benchmarking in Indonesia

Short Term:

- Understanding of RBO Performance based on IWRM principles
- Measurable improvement in RBO Performance
- Routine Benchmarking established

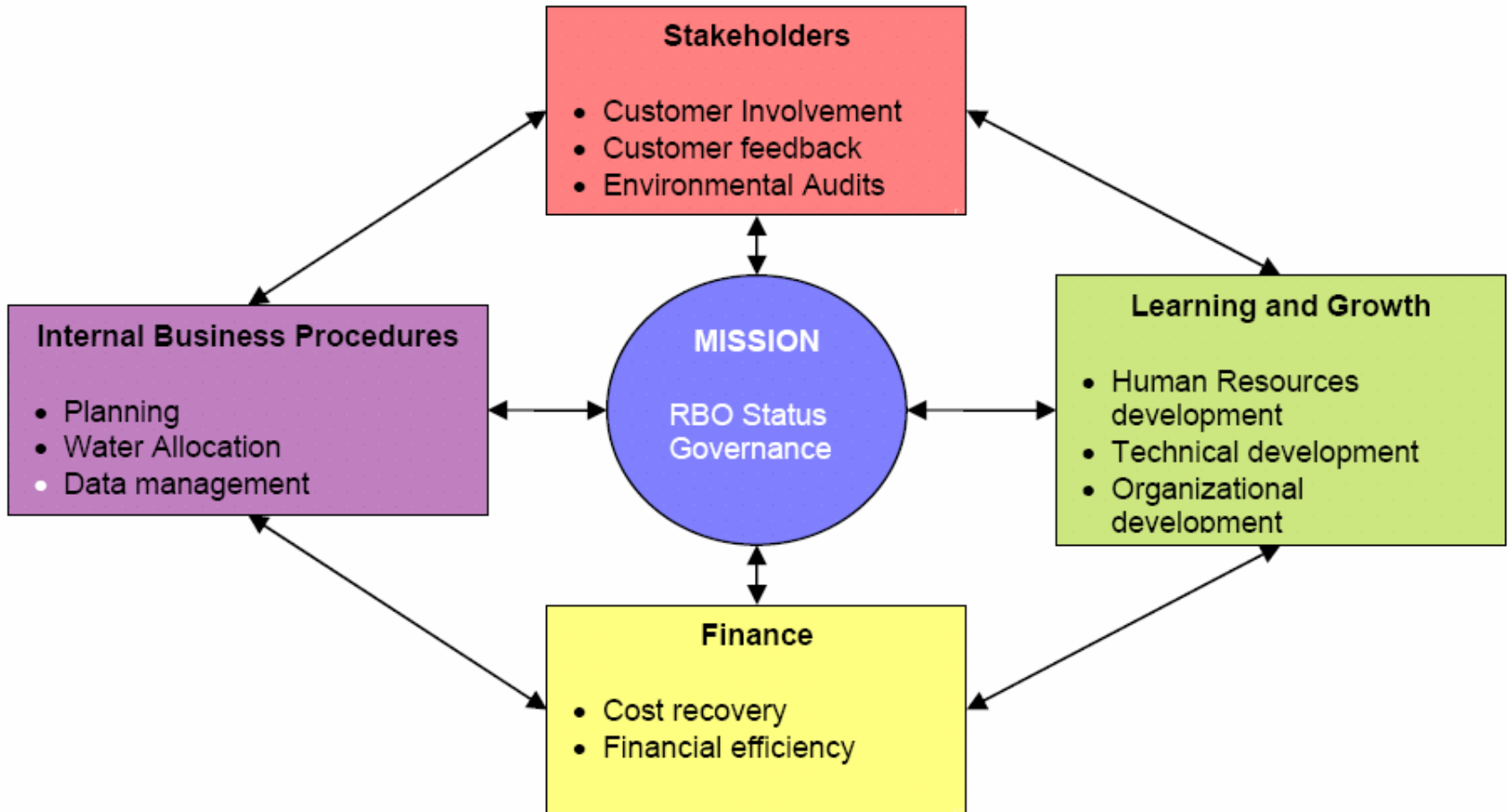
Mid-Term Objectives:

- Measurable country-wide improvement in RBO management performance
- Better understanding of RBO management performance with results-based management targets established, peer reviewed and
- Routine benchmarking and monitoring systems for RBO performance applied on an internal and external basis throughout Indonesia

Long Term:

- Improvement in river basin health and utilization
- Reduction in damages from water related disasters

Balanced Score Card – NARBO RBO Benchmarking Approach



Source:

Eva G. Abal, International WaterCentre, Ganesh Pangare, Regional Water & Wetlands Programme, IUCN, Bangkok, and Ian W Makin, Asian Development Bank

NARBO Performance Indicators

Critical Performance Area (CPA), Objectives & Indicators

CPA	Objectives	Indicators/Measures
I. Mission	■ IWRM	I/1. RBO status
		I/2. RBO governance
II. Stakeholders	■ Customer satisfaction	II/1. Customer involvement
		II/2. Customer feedback
	■ Environmental conditions	II/3. Environmental audits
	■ Livelihoods	II/4. Basin livelihoods
III. Learning & Growth	■ Human resources	III/1. HRD
	■ Infrastructure	III/2. Technical development
	■ System development	III/3. Organizational development
IV. Internal Business Processes	■ Planning	IV/1. Planning maturity
	■ Resource Management	IV/2. Water allocation
	■ Information management	IV/3. Data sharing
V. Finance	■ Financial independence	V/1. Cost recovery
	■ Financial performance	V/2. Financial efficiency

ADB RETA No. 6351 - INO

- ❑ Activities started in July - November 2008.
- ❑ The TA was supported by ADB and a program funded by the Netherlands on Process Development for Preparing and Implementing IWRM Plans – RBO Performance Benchmarking Program.
- ❑ Scope of works :
 - Implement RBO Benchmarking in 6 RBOs in Indonesia with quality benchmarks and targets set.
 - Capacity development of minimal 12 Peer reviewers meeting NARBO's standards for use in Indonesia, and some of these internationally.
 - A wider understanding of benchmarking in Indonesia, within DGWR, Ministry of Public Works and RBOs, and a long term program for its use as a routine management tool.

ADB RETA No. 6351 - INO

Role of PJT I

- ❑ **Jasa Tirta I Public Corporation (PJT I)** were closely connected to the implementation through authority over quality of Peer Reviewers and the Benchmarking Indicators
- ❑ Support for organization of the events such as the workshops, Peer Review Orientation and the Peer Reviews.
- ❑ Provide facilitator and resources persons for the workshops, Peer Review Orientation and the Peer Reviews.



ADB RETA No. 6351 - INO Peer Review Orientation



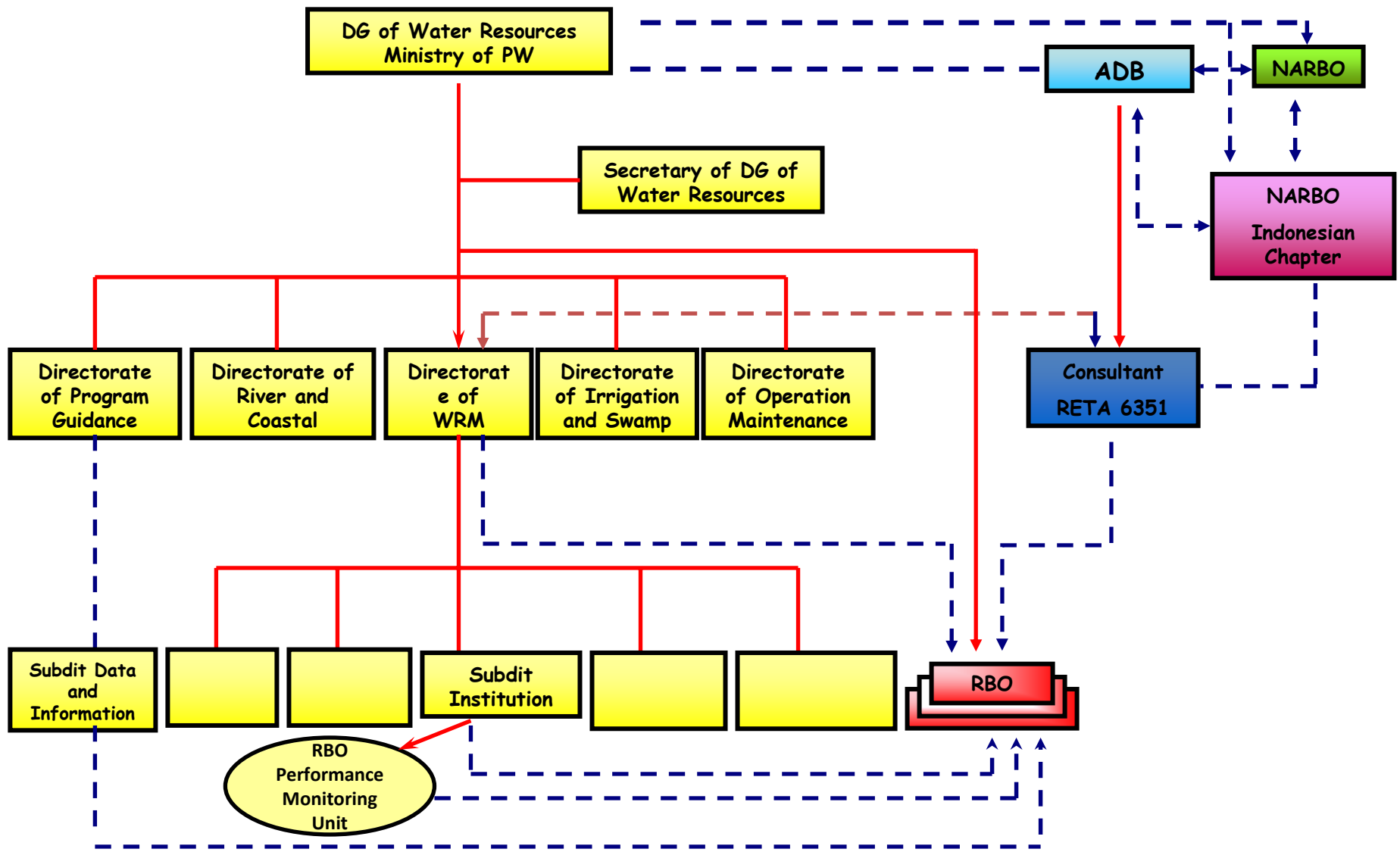
Malang, East Java, July 21-25, 2008 – Hosted by PJT I

RBO Performance Benchmarking in Indonesia (as of November 2010)

NO	BBWS/BWS/BALAI/PJT	Location	SELF ASSESSMENT					PEER RIVIEW	
			2006	2007	2008	2009	2010	Already	Not yet
Central RBOs									
1	BBWS BRANTAS	Surabaya			♦			♦	
2	BBWS CIDANAU-CIUJUNG-CIDURIAN	Serang			♦			♦	
3	BBWS CITARUM	Bandung		♦				♦	
4	BBWS MESUJI SEKAMPUNG	Band Lampung			♦			♦	
5	BBWS SERAYU OPAK	Yogyakarta				♦		♦	
6	BBWS PEMALI JUANA	Semarang				♦		♦	
7	BBWS BENGAWAN SOLO	Surakarta				♦		♦	
8	BBWS CIMANUK CISANGGARUNG	Cirebon				♦		♦	
9	BBWS POMPENGAN JENEBERANG	Makasar				♦		♦	
10	BBWS BALI PENIDA	Denpasar				♦		♦	
11	BBWS KALIMANTAN III	Samarinda				♦		♦	
12	BBWS SULAWESI II	Gorontalo				♦			♦
13	BBWS CITANDUY	Banjar					♦	♦	
14	BBWS CILIWUNG CISEDANE	Jakarta					♦	♦	
15	BWS SUMATERA VI	Jambi					♦	♦	
16	BWS SUMATERA VII	Bengkulu					♦	♦	
Provincial RBOs									
1	BPSDA CIUJUNG CIDANAU	Serang			♦			♦	
2	BPSDA SEPUTIH SEKAMPUNG	Lampung			♦			♦	
3	BPSDA PROGO OPAK OYO	Yogyakarta				♦		♦	
4	BPSDA BENGAWAN SOLO HILIR	Bojonegoro				♦		♦	
5	BPSDA CIWULAN CILAKI	Tasikmalaya					♦	♦	
6	BPSDA CILIWUNG CISEDANE	Bogor					♦	♦	
7	BPSDA MADIUN	Madiun					♦	♦	
8	BPSDA SAMPEAN BARU	Bondowoso					♦	♦	
9	BPSDA JRAGUNG TUNTANG	Semarang					♦	♦	
Public Corporations									
1	PJT-I	Malang			♦			♦	
2	PJT-II	Jatiluhur	♦					♦	
	Total	27	1	1	6	10	9	26	1

Next Round of RBO Performance Benchmarking in Indonesia

- Continue with some 10-20 RBOs per year based on the budget available, preferably in the first half of the year (Jan-July).
- The Directorate of WRM, DGWR, Ministry of Public Works, Indonesia estimate it will take 5-7 years for all RBOs to be trained in the process and to have initiated benchmarking of their performance.
- A team from the DGWR is implementing a program of continuous monitoring to assist the RBOs in the program to improve their performance.
- Adequate budget has to be specified and secured every year.



Note

—→ : Command line

- - -→ : Guidance line

RBO Performance Benchmarking
Guided by Dit Water Resources Management

IMPLEMENTING UNIT FOR RBO PERFORMANCE BENCHMARKING IN INDONESIA

THANK YOU

